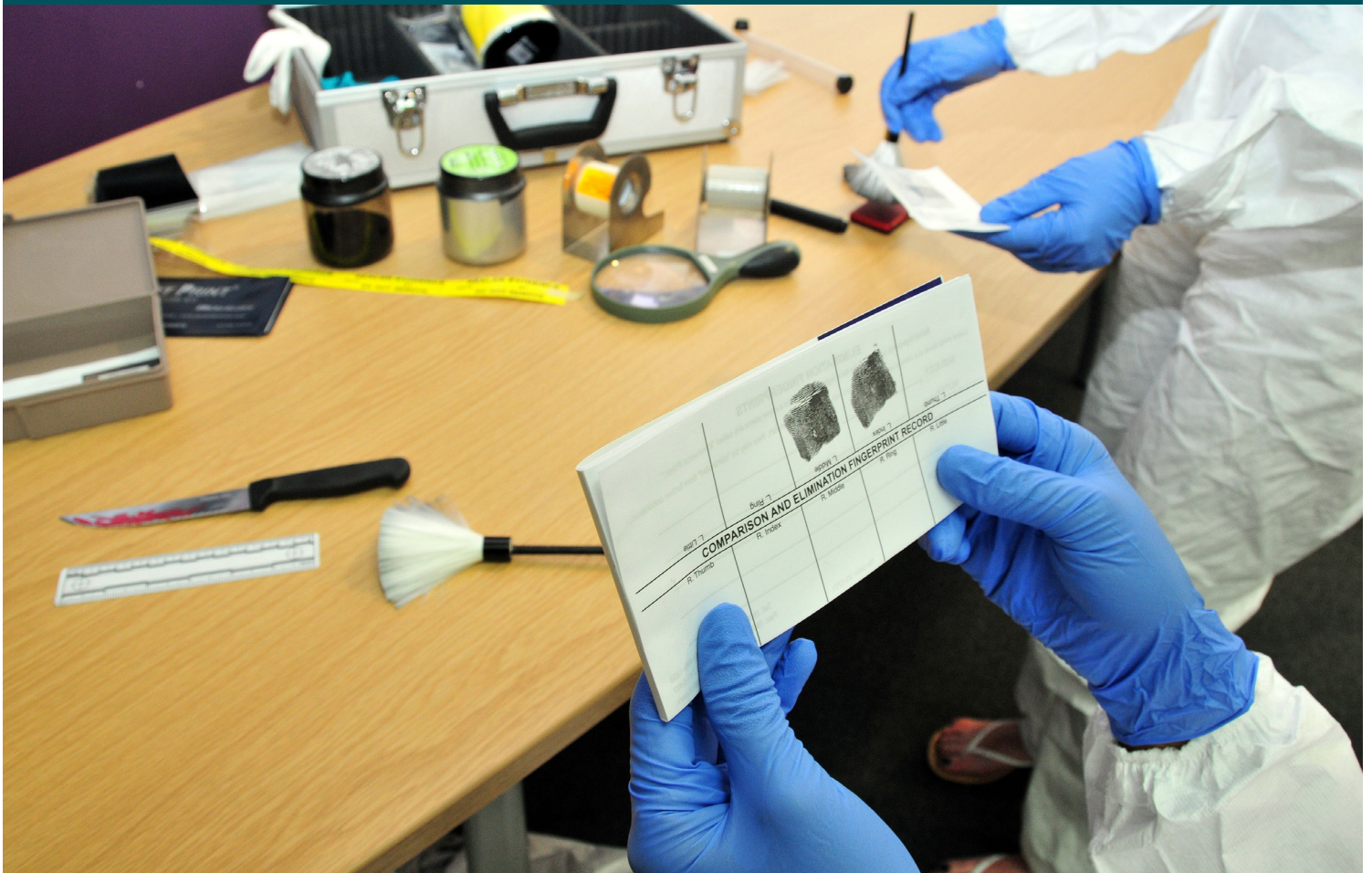




UNIVERSITY OF
GLOUCESTERSHIRE

at Cheltenham and Gloucester

BSc (HONS) CRIMINOLOGY



Television crime dramas are influential, but this course explores what crime and policing is really all about.

Seeking to understand crime and disorder in a social context, our programme addresses key questions such as 'what is crime?', 'what causes offending behaviour?' and 'how can we reduce crime?' Criminology is also critically concerned with the workings of the criminal justice process and the various agencies involved in it.

Our course engages with the interdisciplinary heritage of criminology. It embraces concepts from sociology, psychology, history, cultural studies and philosophy. You'll examine different types of crime, including environmental and white-collar crime. You'll develop an understanding of the theoretical assumptions and research evidence that underpin criminal justice policy, in an increasingly globalised society.

You'll also consider the importance of accountability and discretion in criminal justice decision-making,

as you assess questions such as 'how just is justice?' While you can expect to develop a broad theoretical coverage of the central ideas and issues in criminology, the programme also focuses on the practical application of knowledge and the development of employability skills. The use of case studies in learning and contributions from practitioners across the criminal justice system ensure the practical and vocational relevance of the programme is constantly refreshed.

The course also includes;

- optional opportunity to do a field trip to Belfast to explore crime and policing in a segregated city
- volunteering opportunities within the criminal justice system at all levels

International Development Centre

BSc (Hons) Criminology

Level I	Introduction to Criminology	Introduction to Criminal Justice	Communities and Crime Reduction	Crime and Punishment - Case Studies in History	Option
	Contemporary Issues in Social Sciences	From Crime Scene to Court: Introducing Forensic Investigation	Researching Society	Constructing Social Identities	Option
Level II	Youth and Community Justice	Qualitative Methods	Quantitative Methods Social Sciences	Crimes Against Humanity	Option
	Victims of Crime	Policing & Social Control	Theories of Crime	Psychology & Law	Option
Level III	Environments of Crime	Global Crime	The Effective Detective	Criminology Dissertation	Option
	Comparative Perspectives on Criminal Justice	Contemporary Issues in Penology	Exploring Homicide		Option

Please Note: This course map gives an example of what can be studied within this degree programme (single honours).

ILLUSTRATIVE MODULES

Introduction to Criminology provides a broad introduction to the nature and concerns of the discipline of criminology, introducing you to different perspectives on the definition, causes and meanings of crime.

Introduction to Criminal Justice introduces you to the key players as well as the principles and theories behind the criminal justice system.

From Crime Scene to Court: Introducing Forensic Investigation introduces you to the notion of structured forensic investigation and the place of forensic science in that process.

Communities and Crime Reduction will explore what is meant by crime control and crime prevention and begin to look at evidence around us.

Youth & Community Justice will help you to unravel the complexities of the system of youth justice and the wider issues of community justice.

Victims of Crime introduces you to contemporary developments in relation to the role of the victim in the criminal justice system in England and Wales.

Policing and Social Controls focuses in greater depth on police and policing in their historical, political and sociological contexts.

Theories of Crime is designed to critically engage you in an understanding of the significance of special and temporal issues on crime and policies regarding crime, prevention and security.

Environments of Crime has two inter-linking strands around the areas of crime and the environment.

Comparative Perspectives on Criminal Justice aims to broaden and deepen your critical understanding of criminal justice and penal systems.

Option Modules allow you to choose from a selection of modules – a full list of modules can be seen at www.glos.ac.uk/courses/undergraduate/cri and then selecting 'Detailed Course Information.'

STAFF PROFILE

Dr David Turner PhD, BA (Hons), MA, PGCHE
Course Leader Criminology

David has been Course Leader for Criminology for the past 3 years and he has lectured at the university for 7 years. Having recently obtained a Masters in Criminology and Social Policy he is currently involved in two research projects. The first is examining the effectiveness of Restorative Justice in prisons and the second analyzing improved practices for the resettlement and support of prisoners upon release. David also volunteers a chair of a local regeneration partnership and is keen to involve students in a voluntary capacity within the criminal justice system.

Tel: **+44 1242 7154561**

Email: dturner@glos.ac.uk

STUDENT PROFILE

Cassie Lindsay
BA/BSc (Hons) Criminology and Sociology

"I like the fact that the programme is mainly coursework friendly, which enables me to interact better with fellow students by sharing course knowledge. I've really enjoyed my studies so far, particularly presentations by the Senior Prosecutor of the Crown Prosecution Service and the Gloucestershire Constabulary Superintendent and a field trip to Tewkesbury in my first year to examine the damage caused by the July 2007 floods.

I hope to graduate from the University with a good degree to enter the Crown Prosecution Service."

Benefits of the Course

- Critical engagement with current issues in crime, policing and social order
- Inter-disciplinary connections across the social sciences
- Strong emphasis on employability and vocational relevance and application

Mode of Study / Duration

Full-time, 3 years

International Fees for 2010/11

Annual Tuition Fee £8,615

Entry Requirements

- Applicants should have completed High School with good grades. Some students may have to complete an international foundation course before progressing to the bachelors degree
- IELTS 6.0 overall (5.5 in writing) or equivalent

Joint Honours

Biology / Creative Writing / English Language / English Literature / Geography / History / Psychology / Sociology

Career Paths

- Criminal justice services (police, probation, prison, youth justice, diversionary schemes)
- Crime analysts in public and private sector organisations
- Social research

Enquiries and Applications

International Development Centre
University of Gloucestershire

Tel: **+44 1242 714300**

Email: intoffice@glos.ac.uk