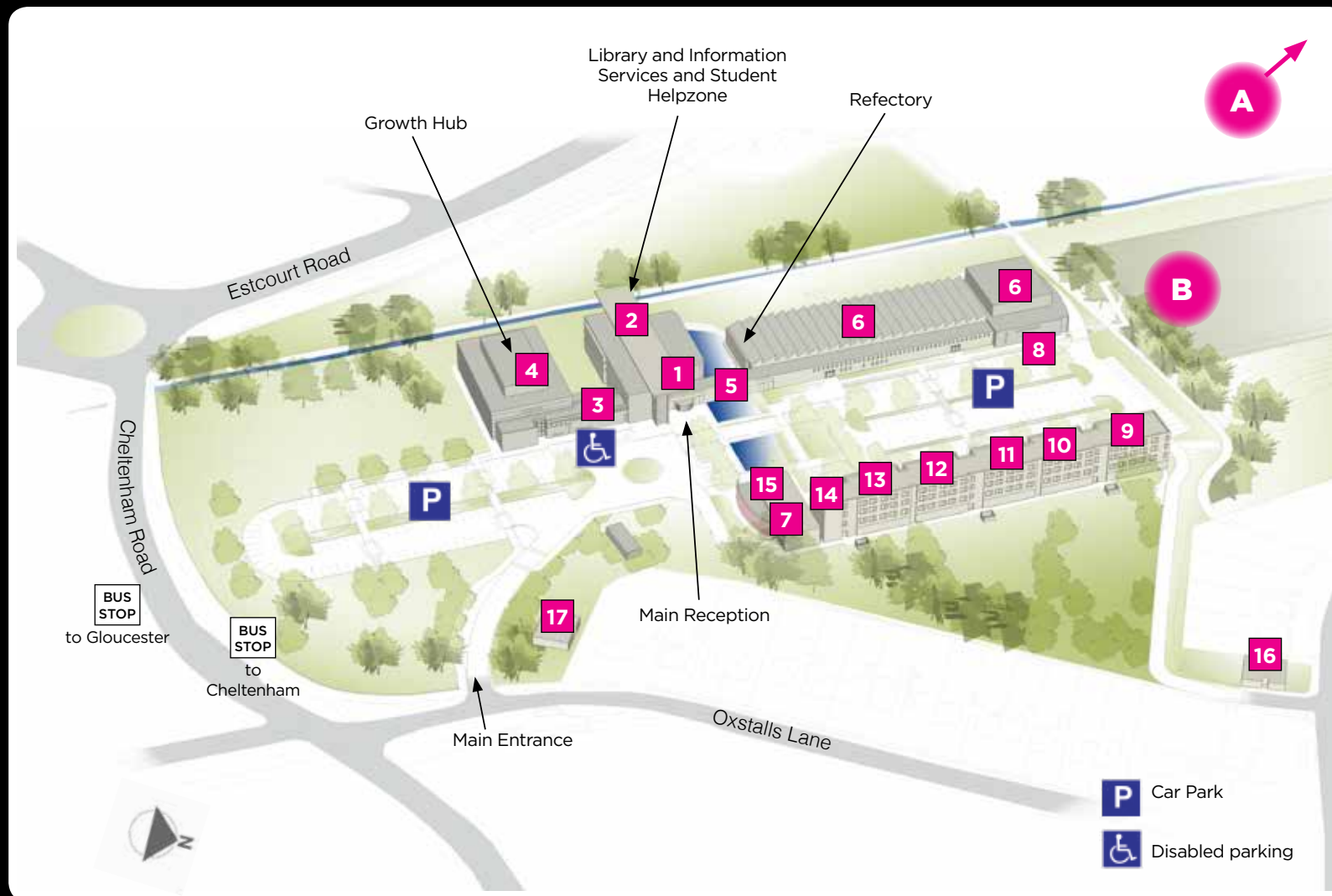


# OXSTALLS CAMPUS GLOUCESTER

Oxstalls Lane, Longlevens, Gloucester GL2 9HW | Tel: **03330 14 14 14** [www.glos.ac.uk](http://www.glos.ac.uk)



- 1** Reception (LC)
- 2** Library (LC)
- 3** New Nursing Facilities (TC)
- 4** Teaching Centre (TC)
- 5** Link Corridor (LC)
- 6** Sports Centre (SC)
- 7** Students' Union and Sports Office (SC)
- 8** Performing Arts and Events Centre

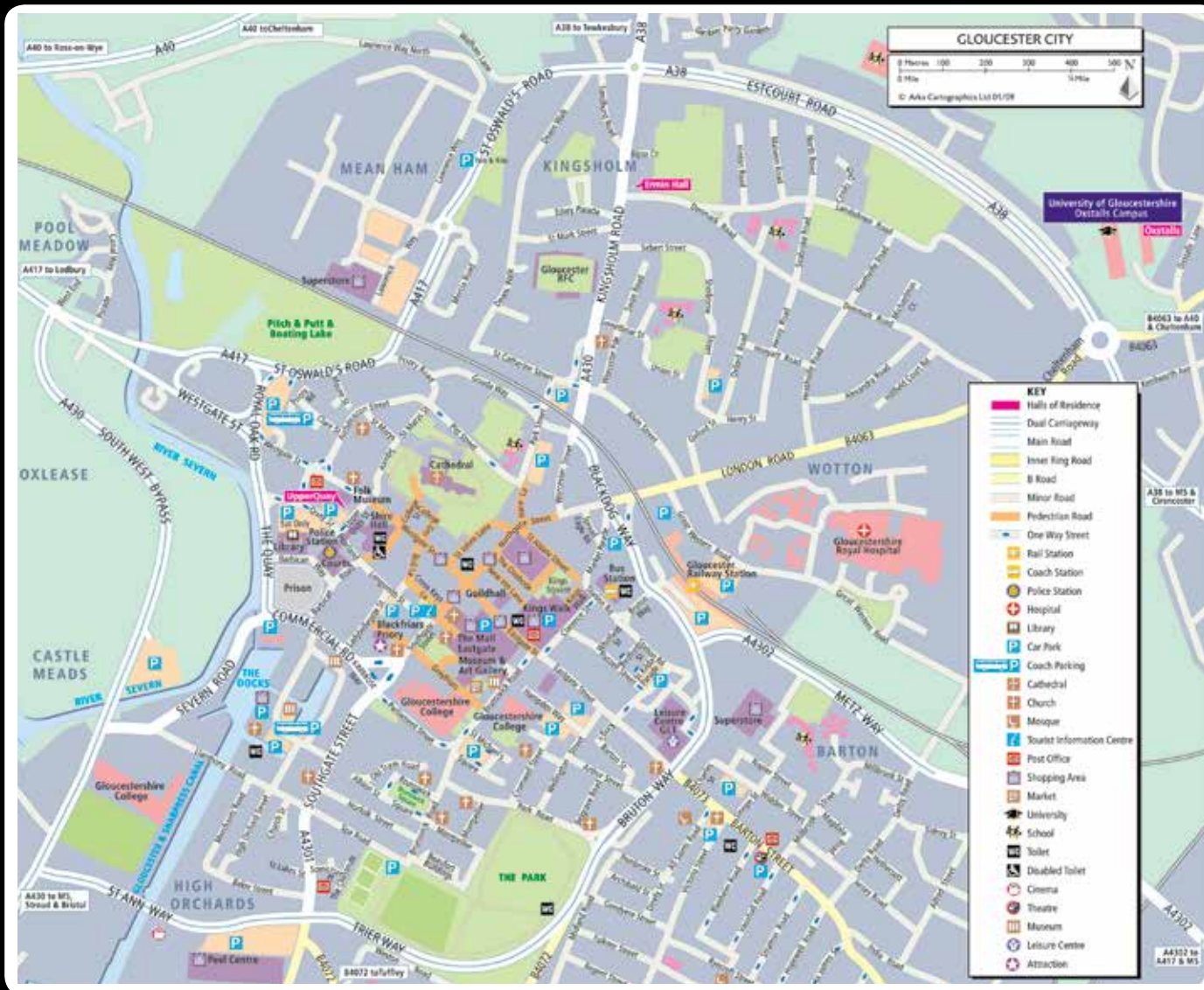
- HALLS OF RESIDENCE**
- 9** Robinswood Villa
  - 10** Crickley Villa
  - 11** Coopers Villa
  - 12** Chalford Villa
  - 13** Birdlip Villa
  - 14** May Villa
  - 15** New SU Bar for Sept 17
  - 16** Willow Lodge (W)
  - 17** Mulberry Lodge (M)

- FACILITIES BEING DEVELOPED FOR SEPTEMBER 2018**
- A** New Sports Hub to include:
    - Sports Hall
    - Sports Centre Parking
    - All Weather Pitches
    - Cricket Pavilion
  - B** New Business School Facilities and Additional Parking

# » GLOUCESTER CITY MAP

Tel: 03330 14 14 14 [www.glos.ac.uk](http://www.glos.ac.uk)

**UNIVERSITY OF  
GLOUCESTERSHIRE**  
at Cheltenham and Gloucester



## TOP HOTSPOTS IN GLOUCESTER...

### » GLOUCESTER RUGBY AT KINGSHOLM

Don't miss the Cherry and Whites in Premiership rugby action at the historic Kingsholm, just a short walk from Oxstalls campus and the city centre. Also look out for live concerts throughout the year.

### » THE CATHEDRAL

Dominating the skyline, Gloucester Cathedral is always worth a visit. You can enjoy the quiet of the cloisters, visit the many exhibitions or, if you prefer your evenings with a magical flavour, go on a Harry Potter tour around the building, which featured as Hogwarts in the film series.

### » THE QUAYS

With its diverse mix of shops and eateries, the Quays promises something for everybody. Whether food festivals, outlet shopping, microbreweries or a trip to the cinema is your thing, the renovated historic dockside is one of Gloucester's most popular venues.

### » CAFÉ RENE

Tucked away off Southgate Street, Café Rene is the place to go for a Gloucester evening. At this pub, restaurant and steakhouse rolled into one, you can go for food before heading down to the cellar bar to see what eclectic musical experience is taking place.

### » THE WAREHOUSE

Scaled the heights and plumb the depths in this transformed Victorian warehouse with Gloucester's own impressive indoor climbing and caving centre. Whether a novice or a veteran, you're bound to find adventure in the Warehouse!